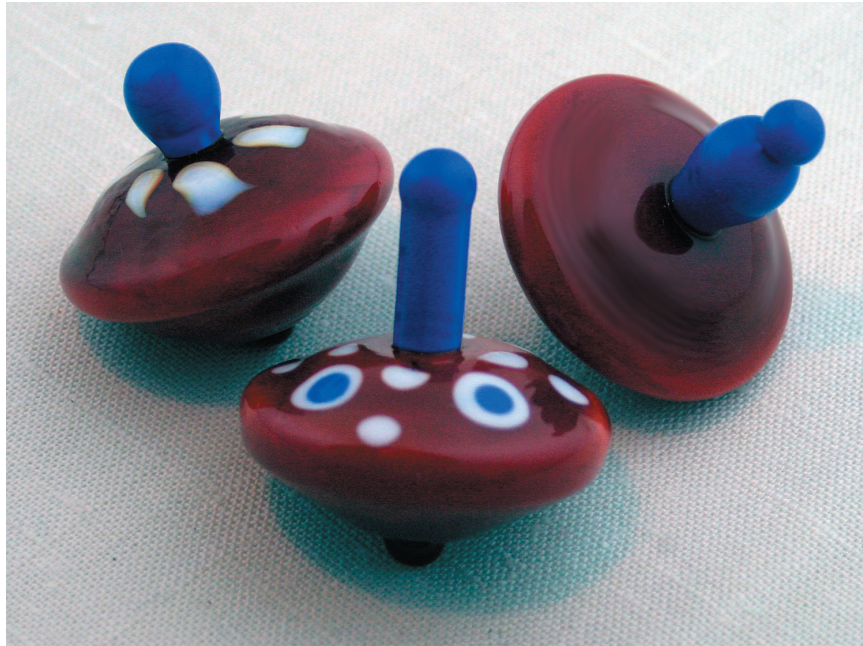


# Glass Spinning Top




Skill Level

*Explore your creative options in making beautiful and functional spinning tops.*

## How to Make a Glass Spinning Top Using the Milliron Toolss Spinning Top Mold

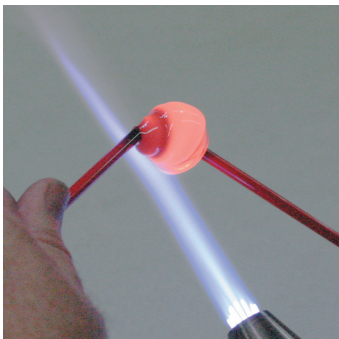


Photo 1  
Start by heating up a mass of glass, on the end of a glass rod.



Photo 2  
Press it into one of the two mold cavities, while holding the glass rod perpendicular to the mold. *One cavity has a profile for making the top of the spinning top. The other cavity has a profile for the bottom. You can choose which you like best for each. However, the first half you make should be the top side of the spinning top, as this will save you steps.*

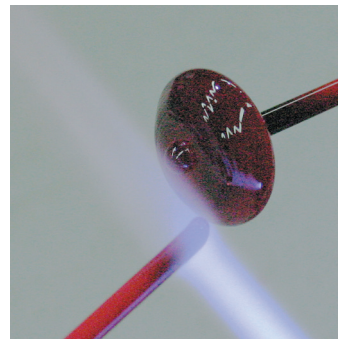


Photo 3  
Remove the glass from the mold. You will see a small nipple perfectly located in the center. This can become either the spinning point (at the bottom of the spinning top) or the handle attachment location (at the top of the spinning top).

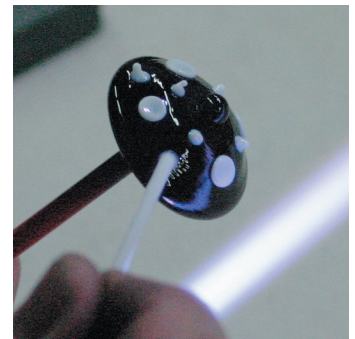
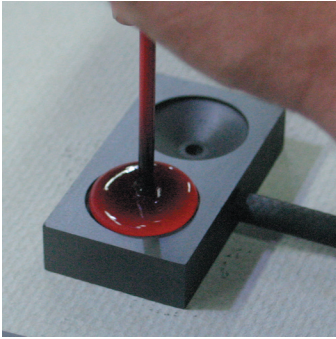
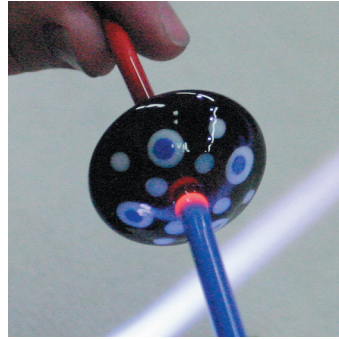


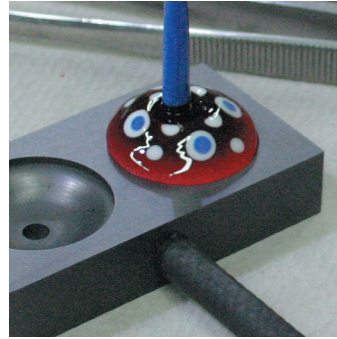
Photo 4  
At this point, you can decorate this first part you just made.



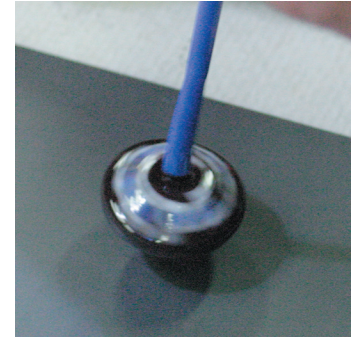
**Photo 5**  
If you'd like to flatten your design, then reheat and press it back into the same cavity to reshape.



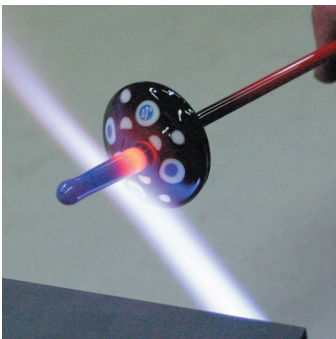
**Photo 6**  
Assuming that you just made the top half of the spinning top, as is recommended, attach what you would like to be become the handle to the nipple. The nipple aids in locating the handle perfectly to the center, makes it easy to make a smooth attachment, and doubles as a punty for making the second half of the spinning top.



**Photo 7**  
Now, to make the other half of the spinning top, add glass as necessary to the unshaped side and press it into the other mold cavity. Decorate and reshape as before. This completes the bottom of the spinning top. *(The mold creates the spinning point for you!)*

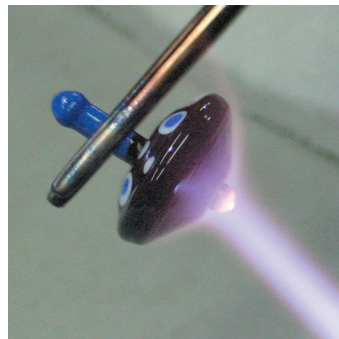


**Photo 8**  
While being careful to keep the spinning top hot enough to not break due to thermal shock, you can do a quick test spin on a graphite pad. Because the punty is still attached, you can maintain hand control. The purpose is to see if the top is properly balanced.



**Photo 9**  
Here's how to finish off the handle: Attach a "cold punty" somewhere on the spinning top and complete the handle.

*Note: A "cold punty" is a delicate attachment; the punty is not fully fused to the base glass and will snap off with a minimum of scarring. A spinning point is a good attachment location as it can be easily removed and fire polished.*



**Photo 10**  
Remove the cold punty and fire polish the attachment location. (This is how marbles are typically completed.)

As with any new mold or new process, give yourself an opportunity to become comfortable with the steps. Then allow your own creativity to take over. You'll be surprised at the amazing results you can achieve!