



NOR-CAL SHAVINGS



Newsletter of Nor-Cal Woodturners, Inc.
A Non-Profit Corporation and AAW Affiliate
www.NorCalWoodturners.org

March 2013

Volume 26, Number 3



President's Message

By Tony White

1(916) 206-9264
President@NorCalWoodturners.org

Well here it is already March. I can't believe how fast the time is going by. Speaking of time, don't forget to get your timepiece or any project having to do with time, turning projects for the president's challenge.

Here are the criteria for participation.

1. There will be three skill levels, novice, intermediate, and advanced.
2. The skill levels will be determined by you.
3. There will be ballots and a receptacle for the ballots in front of each skill level area.
4. Each member that wants to vote writes the number that is in front of the project that she/he feels is the best for whatever the reason. Maybe you just like the color better.
5. Prizes will be gift certificates from our good friends and supporters at Craft Supply.

So bring those projects in so your friends can vote on them, plus you might be able to offset some cost of wood turning along with bragging rights☺

If you weren't able to attend the demo of Mike Jackofsky, you missed a very good demo and some great fellowship. He kept the audience interested the whole day. Mike was fun to watch and a really nice man. I was lucky enough to host him at our home, and Chris Smith did the honor of getting him to Vacaville

for his next leg of his trip. Our next demonstrator is Doug Fisher from Vancouver, BC. Doug does offset platters with a Northwest flair to them. They are very unique, and very beautiful. May 6th at Woodcraft. The signup sheet will be at the meeting. So sign up early to be sure of your spot.

We have a situation that needs a volunteer. Gerald Pierce wants to retire as the mid meeting snack provider. He has been doing the job, and others I might add, for as long as my tenure in this club goes. That represents a lot of time volunteered, and it would be great for someone step up and take over the duties in the kitchen. I'd do it, but there probably wouldn't be enough snacks left by break time for you to have some. There are only 7 more meetings that need refreshments this year. So get together with someone and do it together. Maybe your spouse wants to help. Maybe do half of the meetings left and then prepare someone else for the other half. Please think about it, because there is a need. Remember, giving is just as glorious as receiving.

Thank you for letting me be your president,
Tony White

Calendar of Events

Mar 26 - General Meeting 7:00 pm
Leo Palmiter School, 2040 Ethan Way, Sac.
Norm Hinman demonstrates bowl turning.

Mar 30 - Norm Hinman Workshop
See Norm's article on page 2 for details

Apr 1 - Board Meeting 6:00 pm
Perko's at 3rd Street and J Streets.
No-host dinner is during meeting

May 6 - Doug Fisher Demo

Phil Sargent Workshop
Call Phil at 916-789-1172 for signup

Nor-Cal Woodturners

General Meetings

Leo Palmiter School
2040 Ethan Way, Sacramento CA
Enter Parking lot off Cottage Way
4th Tuesday of the month at 7:00 PM

Board of Directors Meetings

Perko's Restaurant
Corner of 3rd Street and J Street, Sacramento
Meeting room at back left of dining area
Meet at 6 PM. No-Host dinner served during meeting
Members are invited to the Board Meetings

Roster of Officers 2013

President: Tony White
President@NorCalWoodturners.org 916-206-9264

Vice-President: John DePiazza
John.DePiazza@gmail.com 916-834-2466

Secretary: Chris Smith
Secretary@NorCalWoodturners.org 916-288-8447

Treasurer: Richard Prima
RichardCPrima@gmail.com 209-369-6942

Communication Director: Craig Milliron
CraigM@ArrowSprings.com 530-409-9197

Librarian: Hank Wilson
HankGoFish@yahoo.com 916-671-9120

Member-at-Large: Bill Juhl
BJuhl44@gmail.com 530-263-6602

Member-at-Large: Ted Young
TedYoung61@yahoo.com 916-574-9117

Member-at-Large: Richard Bell
RABell05@sbcglobal.net 530-677-3341

Member-at-Large: Phil Manning 916-791-1679
Phil.manning.theblacksmith@gmail.com

Member-at-Large: Nick Jarrell
NJarrell@surewest.net 916-284-1576

Safety Officer & Member-at-Large: Jim Terrill
JETTerrill@att.net 530-417-0888

Membership Information

Dues for the calendar year are \$35 per member and \$10 for spouse (if they desire to join) Commercial memberships are available for \$50 per year. This membership includes yearly advertising in the newsletter. Ads are to be business card size and may be changed from month to month. Contact Treasurer Richard Prima for more membership information.

Newsletter Information

*Newsletter deadline is the fifth of each month. All submissions should be sent to **Craig Milliron, 4570 Tennessee Drive, Shingle Springs, CA 95682** or E-mail at CraigM@ArrowSprings.com*

Mentors

Cameron Park - Richard Bell 530-677-3341
Hollow Forms

Davis - Dorothy Brandon 530-756-9303
Pens

Granite Bay - Tom Castaldo 916-791-7544
Christmas Ornaments, Natural Edge Vessels,
Texturing and Boxes

Roseville - Phil Sargent 916-789-1172
Natural Edge Vessels, General Turning

Stockton - Corwin Jones 209-951-4622
General Turning

Yuba City - Norm Hinman 530-673-5056
Basic Bowl, Basic Spindle and Natural Edge
Vessels

The Mentor program is available to members who have questions or problems with turning and would like verbal or hands-on help. Check in with the Mentor(s) in your area of interest and get acquainted!

Woodturning Workshops

Sign up at the General Meeting for a three-on-one workshop with Nor-Cal Woodturners' Mentor, Norm Hinman, held at his shop. Each member has use of a full size lathe, plus instruction and guidance for the day. Only \$20 and includes materials and use of tools. Phone: 530-673-5056.

Saturday, March 30, 9:00 - 4:00

Proprietary names which may be included herein are for information purposes only, and no endorsement of any particular product or supplier mentioned or criticism of others not mentioned by Nor-Cal Woodturners is implied.

Woodworking Club News

This section of our newsletter is to keep you informed of news about activities relating to turning and other woodworking.

Bay Area Woodturners Association

They meet on the 2nd Saturday of each month at Mount Diablo Adult Education School in Pleasant Hill. Check out their website and newsletters at www.bayareawoodturners.org

Gold Country Woodturners

Meetings held at 1:30 on the 4th Wednesday of each month. Check out their "video of the month" at www.goldturners.com You are invited to attend our next meeting as a guest.

Segmented Woodturners

This is a "virtual" club you can reach at <http://segmentedwoodturners.org/> Malcolm Tibbetts is the President. They have great photos and articles on segmented turning.

Sacramento Area Woodworkers (SAW)

Meetings held at the Senior Center at 7:00 pm the 1st Tuesday of each month

Newsletter Articles

Got a great idea you want to share with your fellow Woodturners? Whether it is a turning tool, turning technique, finishing process or anything at all related to turning, your Nor-Cal Woodturners newsletter can always use an article. If you have pictures, all the better. If you need help writing it up or taking pictures, we're here to help. That's what our club is all about - sharing.

Contact either the club president or newsletter editor.

President Tony White

Phone: 1(916) 206-9264

Email: President@NorCalWoodturners.org

Newsletter Editor Craig Milliron

Phone: 1(530) 409-9197

Email: CraigM@ArrowSprings.com

It Takes Character To Be President

Our illustrious leader, club president Tony White, came to the February general meeting dressed as Mr. Haney (as he is affectionately known in woodturning circles), the wheeler-dealer character from the 1960's sitcom Green Acres.



Spheres

Ted Young found this article in a woodturning book from 1921.

ART AND EDUCATION IN WOOD-TURNING

A TEXTBOOK AND PROBLEM BOOK
FOR THE USE OF STUDENTS

BY

WILLIAM W. KLENKE

INSTRUCTOR IN WOODWORKING AND ARCHITECTURAL DRAWING,
CENTRAL COMMERCIAL AND MANUAL TRAINING
HIGH SCHOOL, NEWARK, NEW JERSEY

Trim off the corners and sandpaper thoroughly. It will be observed that we do not cut the waste wood at either end below $\frac{3}{8}$ ", leaving the final cutting to be done with a knife and cleaned up with a file and sandpaper. If properly finished by hand no rechecking will be necessary. On account of wood shrinking in one direction only, it will be advisable to cut the end grain of the ball about $\frac{1}{32}$ " less in diameter than the width; when the wood has dried out thoroughly, the ball will be as round as it is possible to turn one.

Lighting the Lathe

Dorothy Brandon has found a helpful article on adding light to your lathe on the Popular Woodworking Magazine website.

<http://www.popularwoodworking.com/woodworking-blogs/editors-blog/lighting-the-lathe>



Competitions in this program showcase the creative talents of California residents 18 years of age and older in the categories of **Creative Arts, Handcrafts, Fiber Arts, Needlework, Quilting, Scrapbooking, and Card Crafting.**

Entries compete for ribbons and cash awards! There are no prerequisites for entry. Please see the [Competition Handbook](http://www.bigfun.org/wp-content/uploads/2012/02/Creative-Arts-Book2.pdf) for details.

<http://www.bigfun.org/wp-content/uploads/2012/02/Creative-Arts-Book2.pdf>

ENTER ONLINE

<https://bigfun.fairmanager.com/>

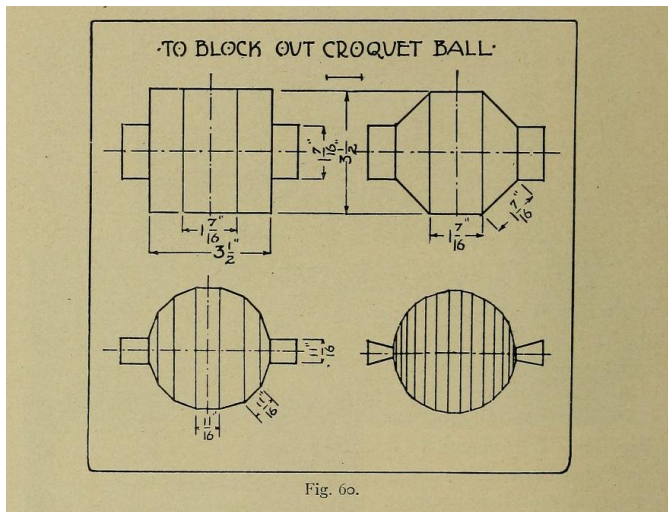


Fig. 60.

The Ball – It will be noticed in Fig. 60 that we first turn a cylinder of $3\frac{1}{2}$ " in diameter; then locate the center, and measure $1\frac{3}{4}$ " on each side of this line (a cross section thru the axis forms a perfect square; we intend, as it were, to inscribe an imaginary circle in this square). Our next step will be to cut so as to make the square section octagonal. Having reached this point we now cut so as to make the section a 16-sided figure; and so on until we attain 64 sides; when we have almost a round surface.

February demonstrator, Mike Jackofsky, demonstrated his hollowing techniques

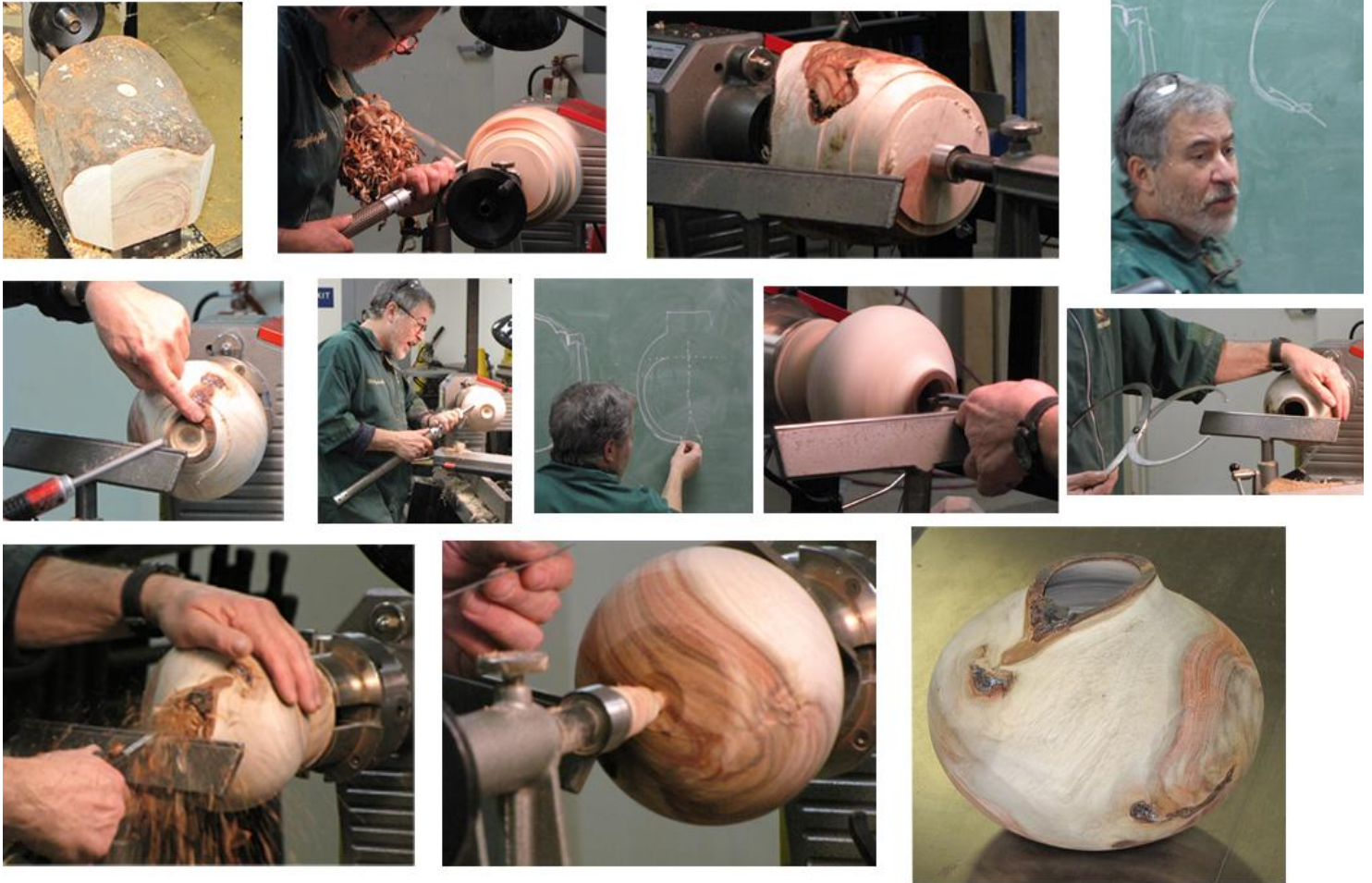


Throughout the day Mike gave tips and tricks, using a bowl to demonstrate.

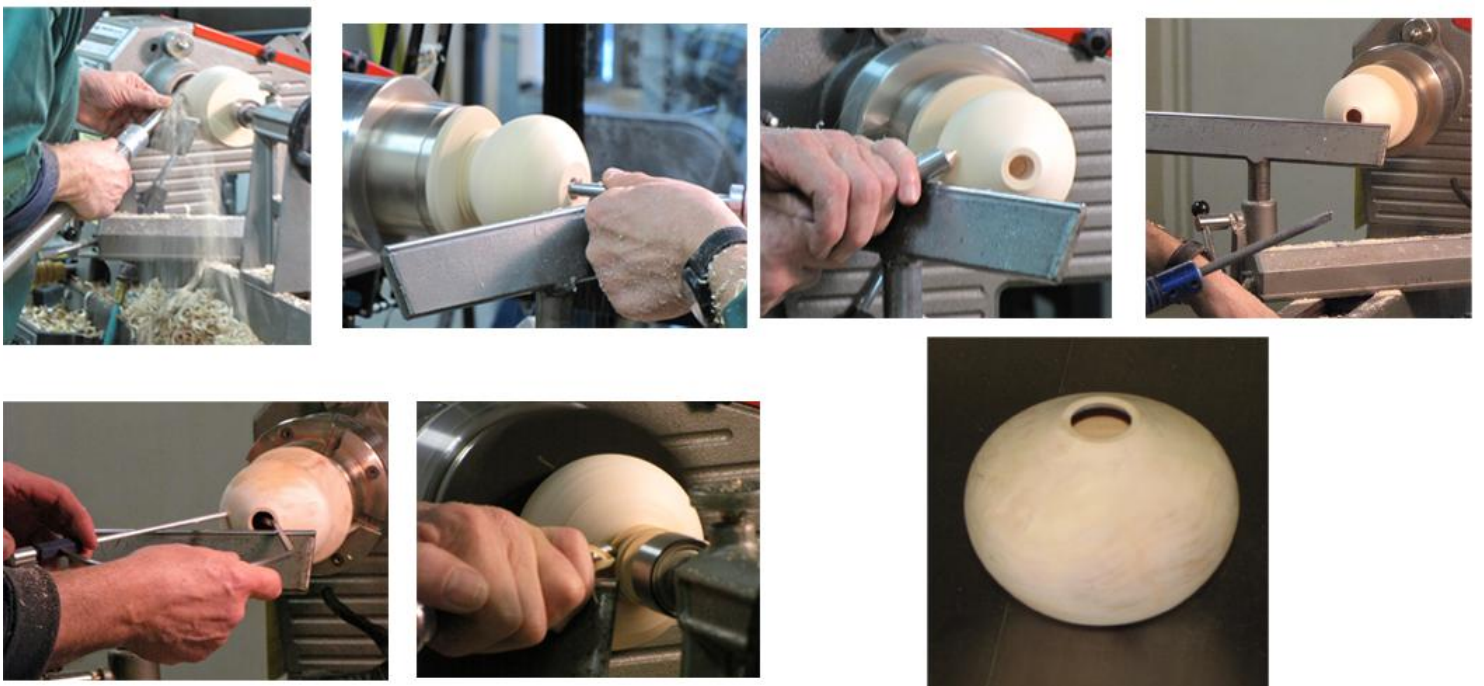


Thanks to Chris Smith for documenting Mike's wonderful demonstration

The next project was a Carob hollow form.



To finish up he turned a small maple vessel in 40 minutes.





President Tony White
Presides over
February Meeting

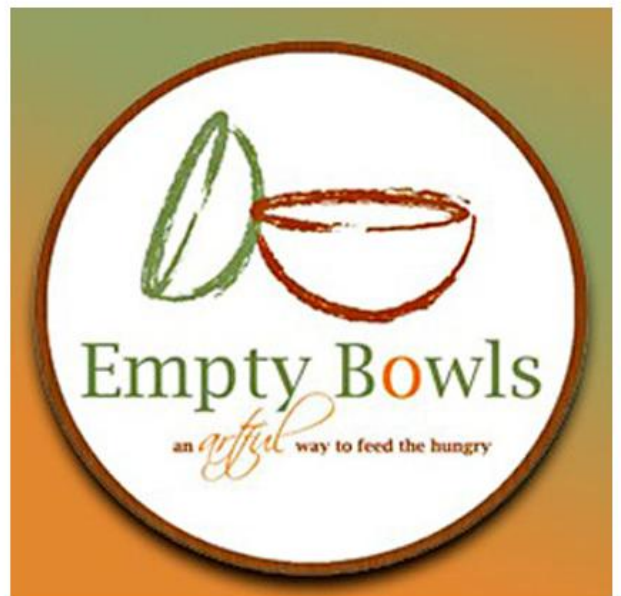




Cheryl Chambers- Bowl Co-ordinator
Eileen Thomas- Director of River City Food Bank
Betsy Myers- Chair of Empty Bowls

Bob and Judith Prichard turned in an incredible 50 bowls out of the 146 donated. The turned bowls are picked the quickest at the luncheon.

Ted Young has headed up the Empty Bowls project for Nor-Cal Woodturners the last three years. Chris Smith takes the reins this year, hoping to exceed 200 club donated bowls by club members for this worthwhile cause.





February meeting's panel discussion on finishes

Panel members from left to right: Bill Juhl, Gene Kelly, Norm Hinman, Russ McAnulty, Phil Sargent, Neal DeVore





Gallery Participants



"Trumpet"
 Dizzy Gillespie Style
 Nor-Cal Wood Turners Collaborative 2000

Bob Adam	Jerry Brackett
Charles Brownald	Tom Castaldo
Judy Coffey	Wayne Goodwin
Norman Hinman	Gene Kelly
Mats Lewill	Berbert Medogor
Gerry Sanders	Jim Stout
Hal Svenningsen	Lori Wade



Gallery



Lee Hoffman



Bill Juhl



James Terrill



Jay Richins



Neal DeVore





Chris Smith



Phil Harris



Russ McAnulty



Bob McClury



Phil Sargent





Tony White



Scott Arfsten



Tim Casy



Rick Warren



Youth Training Projects



Ted Young

Shop Tour Richard Prima

My shop is located in the 100+ year old hay barn that was just outside the house when I purchased it in 1981. It had no wiring (at least none that was safe to use), 2/3 of it had dirt floors and walls you could see through in places. Over the years I made various improvements, which continue to this day. In fact, the internal layout is always getting tweaked as I change equipment or just have an idea of how to improve things. For the first couple of decades, I focused on basic things – wiring, concrete floors, insulation, windows, interior walls, storage loft, minor addition, etc. It housed my pickup, my wife's car, general purpose carpentry tools and storage. It now totals 1,120 square feet and I can't fit a car in at all. So, you know where my priorities are! (Of course, my wife wanted an attached garage, a new kitchen and other stuff, so one major remodel later we got the vehicles back inside.)

I only started turning in 2007 and have gradually worked in space for my two lathes and related turning equipment. I bought the Jet Mini lathe in 2007 – I didn't want to spend a lot of money since I wasn't sure I'd like turning that much. The sales guy said "You'll love it and before long you'll want a bigger lathe". Well, he was right and in 2008, when I retired from full-time work, I found a used VB36 and made it my retirement present to myself. I figured I'd skip the intermediate sizes. The Jet was relegated to the back corner only to be reactivated last year when I added a bed extension and used it to make a couple of canes.

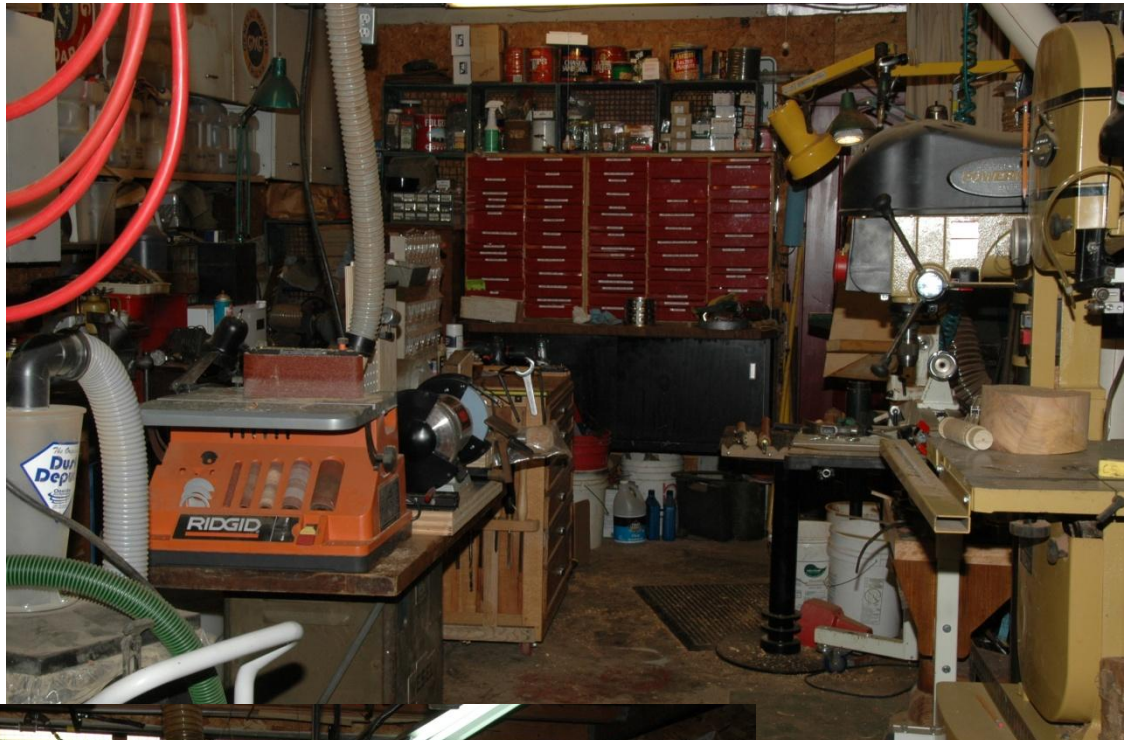
In the side rooms, not shown in the pictures, one houses wood and lumber storage, less-used tools and miscellaneous junk. The other side has a table saw, big bandsaw, jointer, cut-off saw, and, of course, more wood storage! The cyclone dust collector and air compressor live outside where the noisy beast belongs. Interestingly, when I added electrical service to the shop years ago, I only put in a 60 Amp panel. After all, the old house was only on a



100A panel! But, since the shop is just for me, that's plenty to run a 5 Hp compressor and dust collector along with the lathe, the lighting and even the radiant heater. I've never tripped the main 60A breaker. (One tip – if you want to modify your shop, learn how to do wiring properly; it's not that difficult.)

I tend to scrounge and make a lot of my own improvements in the shop – recycled kitchen cabinets, the lathe tool chest is made from oak flooring scraps, and there are a lot of quickly made adaptations to used furniture, storage chests or salvaged tool parts.

Now I just need to get rid of the part-time engineering work I've been doing since I "retired" and spend my days in the barn (or "Barnella" – my other girlfriend, as my wife calls her.)



Shop Tour Chris Smith

When we built our one car garage I had them add a 10' x 11' shop at the end. I have to park my car on the street, but it's worth it! I didn't clean the shop before taking these photos, but it's a more realistic view. The cabinets were from a remodel job on a rental property. I put a double layer of plywood over the top for a work bench and hooked up a sink with a small under-sink water heater. You may notice on the upper cabinets some woodturning photos. I cut up the club calendar from several years ago for inspiration. With a 9' ceiling height I've got a bit more room to store things on top of the cabinets as well. I rigged up two shower curtains (rods from IKEA) to keep some of the shavings out of my storage areas after seeing Corwin Jones' shop.

I'm using a Jet 1236 lathe I got from Craig's List on a trip to Oregon. The other main tools I use are an old drill press and a nice band saw. I've a cheap little table saw and a belt sander, but I don't use them often. There is a small shop vacuum with several outlets to help with clean up, but I don't have a dust collection system, except for the fan on the ceiling, which does help. Mostly, I keep a mask on and keep the door and window open.



There is wood stored on the shelves around my wife's car in her part of the garage and along the side of the house so that helps to give me a bit more room in the shop. It's a

small space, but I can do most of what I need to in the shop or out on the patio.



Shop Tour James Terrill

Like many of us, Jim packs in a full complement of woodworking equipment, tools and supplies into a two car garage.







WOODCRAFT®
Helping You Make Wood Work®

Your Most Complete Woodworking Store!



**9523 Folsom Blvd.
Sacramento, CA 95827
Phone: (916) 362-9664**

http://www.woodcraft.com
e-mail: sacramento-retail@woodcraft.com

**Hours: Mon-Tue-Wed-Fri: 9AM – 7PM, Thur: 9AM – 9PM
Sat: 9AM – 6PM, Sun: 9AM - 5PM**



CRAFT SUPPLIES USA
THE WOODTURNERS CATALOG
woodturnerscatalog.com • 1-800-551-8876

Urban Logging Inc
Balancing, people, planet & plants

Jay Are Pilz
International sales manager

501 Derek Pl.
suites 120 & 150
Roseville Ca.
E-mail sales@urbanlogginginc.com
Web urbanlogginginc.com
916-678-9676 & 916-705-9802
fax 916-791-6727




Sacramento Machinery Company
Since 1952

Your One-Stop Source for:
Machinery • Power Tools
Accessories • Supplies



Visit Our New On-Line Store at:
www.cbtoolgroup.com

729 W Del Paso Road, Sacramento, CA 95834
916-568-7514 or Toll free 800-762-9663
Hours: M-F 8-5. Saturday 9-1
An Employee Owned Company



TREESCAPES
Honoring Nature Through Our Work

PRUNING
REMOVAL
URBAN LOGGING
FERTILIZING
AERATION
ARBORIST REPORTS
CONSULTATIONS

916.705.9802
KEVIN KEMPER
OWNER
ISA Certified Arborist WC#0402A
CL #964702
A KEMPER INDUSTRIES INC. COMPANY



Specializing in
Pacific NW Hardwoods
Stunning Maple burls
Black Walnut • Black Locust
Myrtle and White Oak



Enter to
Win \$100!
Plus 20% Off
Online Order

www.nwfiguredwoods.com
(800) 556-3106



Clark Kayler

New Helvetia Hardwoods

newhelvetiahardwoods.com
(916) 548-4007



26 – BEESWAX

Block

SO well known as not to require description, beeswax produces best results if it is used after the finished work has received a coat of sealer or friction polish.

It can be applied by light pressure of the wax block to the workpiece as it revolves in the lathe.

This will leave on the surface an evenly distributed coat of wax which is polished into the work by friction using a piece of soft cloth. The result will be a warm, eggshell sheen on the work.

Paste

The paste form of beeswax is extremely useful when polishing both flat and turned work such as is found in cabinet making.

Paste wax is best used after sealer or friction polish has been applied to the finished work. An evenly distributed coat of paste is brought to a warm sheen by burnishing with a soft cloth or shoe brush.

This practice has been used to great effect on fumed oak; a few applications produces a finish superior to that of french polish.

To make beeswax paste, mix beeswax with genuine turpentine until it reaches the consistency of butter.

You can do this two ways.

- 1 Finely shred the beeswax into the turpentine and leave overnight, which allows the two to dissolve without the use of heat. The mixture will be ready to use the following morning.
- 2 Using heat. **Care must be taken.**
Do not use direct heat as both the wax and the turpentine are highly flammable; direct heat can also de-nature the mixture.
The safest way is to place the wax and turpentine together in a container which is then placed in hot water. This method will not de-nature the mixture.

Advantages of beeswax

It is easy to apply; furniture and turned work can be quickly recoated and burnished at any time.

Disadvantages of beeswax

It has a low melting point and treated surfaces are prone to damage from damp and from sweaty fingers.

Woodturning Notes *Allan Batty*



27 – CARNAUBA WAX

THIS is a very hard, vegetable wax which is obtained from the leaves of a palm tree (*Copernicia cerifera*) which grows throughout South America. Carnauba wax has a high melting point (185° to 195°F) and is the hardest and toughest of the natural waxes. It can be applied in the same way as beeswax, after sealing the wood, and leaves a very high shine.

Advantages of carnauba wax

Since it is extremely hard, it is much more resistant to marking than is beeswax.

Disadvantages of carnauba wax

Because of the hardness of this wax it can mark the surface of the work when used on softer woods.

28 – BEESWAX/CARNAUBA WAX MIX

WE can turn the disadvantages of the two aforementioned waxes to our advantage by mixing them together.

Two parts beeswax to one of carnauba gives us the ideal wax, not so soft as to readily finger mark, and not so hard as to score our finished work. The mix is applied in the manner already described.

29 – WAX STOPPER STICKS

WHEN mixing the waxes save a portion and add artist's coloring powders to make stopper sticks of different colors. Cast them into a suitable container such as a baking tray.

The sticks are ideal for melting into cracks or imperfections in your work so as to render them invisible. Melt them using a soldering iron, a hot wire or a lit match.

For example, if a small knot is missing from the work you could melt two or three different shades of brown stopper sticks into the hole and, as each blends into the other, you will create the impression of a knot.

By experimenting you can disguise almost any defect. The beeswax/carnauba wax on its own is just the right shade for pitch pine, beech and similar colored woods.



Douglas Fisher

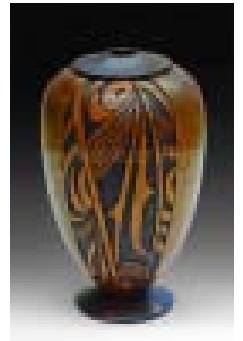
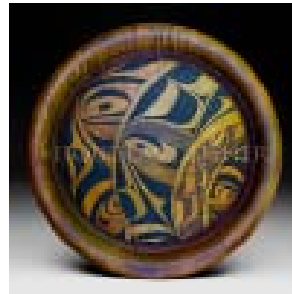
Monday May 6th

9am to 4:30 pm

Woodcraft

9523 Folsom Boulevard, Sacramento

[\(Map Directions click here\)](#)



Douglas J Fisher is a full-time artist living on Vancouver Island, Canada. Since 1992 he has been involved almost exclusively in creating some form of art, including painting, stained glass, photography, pen and ink drawing, and woodturning. Wood sculptures, primarily made using a lathe, have been the focus of his work since 1997.

'How to Turn, Carve and Color an Off Center-Off Axis Sculpture'

In this one-day demonstration you will learn how Douglas turns an off center, off axis sculpture using a vacuum chuck. You will also learn all the methods Douglas uses to achieve the look of his pieces. This will include applying the design, rotary carving, burning, and coloring. There will also be two short slide presentations, which will touch on design, form and inspiration. You can apply most of these methods to your own work even if you don't have a vacuum chuck. www.douglasifisher.com

I, _____, want to attend the Doug Fisher demonstration.

Print your name

_____ Nor-Cal Member only \$ 35.00

_____ Non-Member \$ 40.00

Mail this form and a check (payable to Nor-Cal Woodturners) to
Richard Prima, 6613 E. Sargent Rd, Lodi, CA 95240-9341